

*Молния*

---

PASSPORT

АЧС-1 • VERSION 5.0



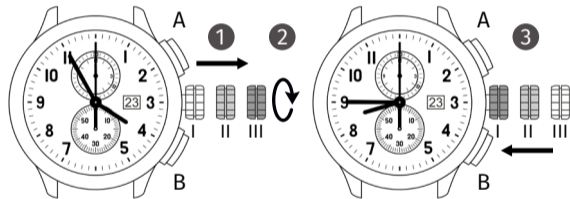
- 1 – hour hand
- 2 – minute hand
- 3 – second hand
- 4 – date
- 5 – winding crown

- 6 – minute counter
- 7 – hour counter
- 8 – stopwatch
- 9 – control button A
- 10 – control button B

## DESCRIPTION, FUNCTIONS AND DISPLAYS

AChS-1 5.0 is a watch with a chronograph function with a quartz movement.

### 1. TIME SETTING



- 1**\* Pull out the winding crown to position III (the watch will stop).
- 2** Turn the crown until the correct time is set at 08:45.
- 3**\* Return the crown to position I.

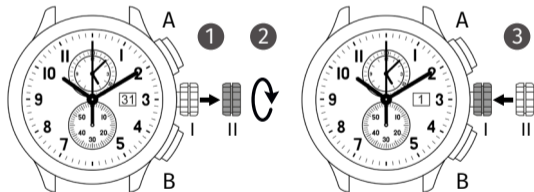
## CAUTION

To set the time within the accuracy of a second, it is necessary:

- 1 To pull the crown out to position III when the second hand is at 60.

As soon as the hour and minute hands are in the correct position, 3 the crown must be turned to the starting position of the second hand.

## 2. SETTING THE CURRENT DATE



### Setting the date (Quick mode)

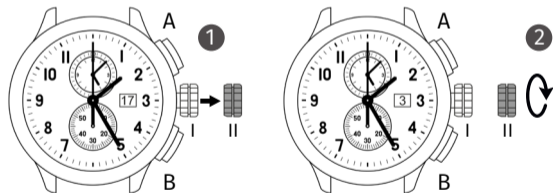
- 1\* Pull the crown out to position II (the watch continues to operate).

- 2 Turn the crown counterclockwise until the correct date appears in the window.
- 3\* Return the crown to position I.

## CAUTION

When setting the date between 8.30 p.m. and midnight, the next day's date must be set.

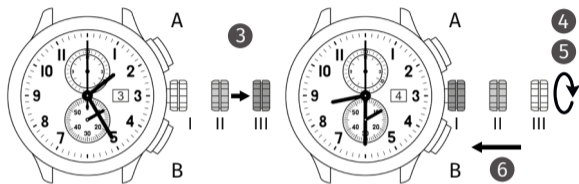
## Setting the date / time



Example:

- date/time on the clock:  / 1:25 a.m. till noon
- current date/time:  / 8:30 p.m.

- 1 Pull the crown out to position II (the watch continues to operate).
- 2 Turn the crown counterclockwise until setting yesterday's date 3.



- 3\* Pull the crown out to position III (the watch stops).
- 4 Turn the crown until the correct date is set 4.
- 5\* Continue turning the crown until the correct time is set at 8:30 p.m.
- 6 Return the crown to position I.

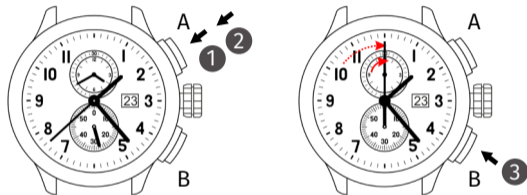
#### CAUTION

\* To set the time within the accuracy of a second, follow the instructions in the Time Setting section.

\*\* please ensure that the a.m. / p.m. mode is observed when setting the time.

### 3. CHRONOGRAPH USE

#### Chronograph: basic functions

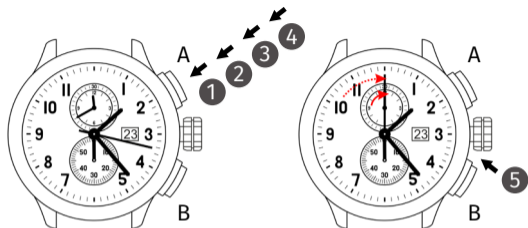


Start / Stop / Reset


Example:

- 1 Start: Press Button A.
- 2 Stop: To stop the count, press Button A again and read the chronograph reading for 4 hours/20 minutes/38 seconds.
- 3 Reset: Press the Button B (the chronograph hands will return to their original position).

## Chronograph: adding time intervals



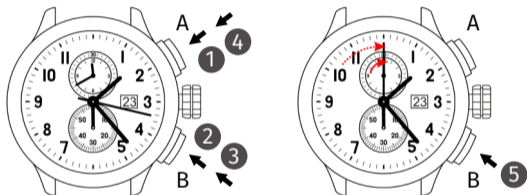
Example:

- 1 Start: (Start time count).
- 2 Stop: (e.g., 15 min 5 sec, then step 1).
- 3 Restart: (count resumed).
- 4\* Stop: (e.g. 5 min 12 sec, step 3) = 20 min 17 sec).  
The total time count will be displayed.
- 5 Reset:  chronograph hands will return to their original positions.

## CAUTION


\* If you repeat step 4, the time intervals will continue to add if you continue to press the A Button. (Restart/Stop, Restart/Stop, ...).

## Chronograph: timespan or interval counting



Example:

- 1 Start: (begin the count).
- 2 Displays the time interval: e.g. 20 min. 17 sec. (the count will continue in the background).
- 3 Locking the measured time: (the chronograph hands will immediately move to the current measured time).

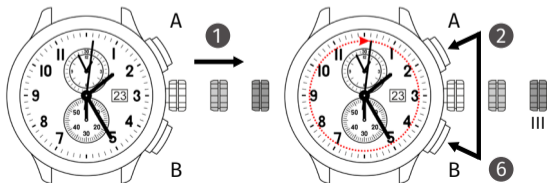
- 4 Stop: (the stop time is displayed).
- 5 Reset:  chronograph hands will return to their original position.

### CAUTION

\* Step 3 The following intervals or time spans can be displayed when button B is pressed again (displaying the interval/locking the measured time...).

## 4. HAND CORRECTION

### Adjusting the position of the chronograph hands (returning to zero position)



Example:

One or more of the chronograph hands are in the wrong (other than zero) position and must be corrected (e.g. after replacing the battery).

- 1 Pull the crown out to position III (all chronograph hands are in the correct or incorrect (other than zero) position).
- 2 Hold down Button A and Button B for at least 2 seconds simultaneously (the stopwatch hand rotates 360 degrees: the adjustment mode is activated).



↓ Adjusting the stopwatch hand

Once  **A** 1 x briefly

For a long time  **A** long



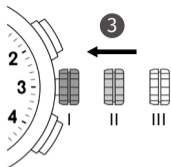
↓ Correcting the next hand **B** 

↓ Correcting the minute and hour counter hands (mechanically linked)

Once  **A** 1 x briefly

For a long time  **A** long





3 The crown returns to position I. End of chronograph hand position correction (can be done at any time).

## INSTRUCTIONS FOR USE, CARE AND STORAGE

### 1. WATER RESISTANCE

AChS-1 5.0 is 5 ATM water resistant, this marking is conditional and means a pressure of 5 atmospheres the watch may withstand. These watches are resistant to splashes, rain, you can wash your hands wearing them. You cannot swim, dive, snorkel or scuba dive wearing the watch. Please note that the crown must not be pulled out of the watch and the control buttons must not be pressed when the watch is wet.

### 2. BATTERY

The battery life is expected to be from 1 year to 4.5 years. If you do not intend to wear the watch for several weeks or months, we recommend pulling the crown out to position III. This will extend

the battery life. At the end of its service life, the battery must be removed immediately and replaced in an authorized service center.

### 3. CARE

We recommend that you clean your watch regularly (except for the leather strap) with a soft cloth moistened with warm soapy water.

### 4. PRECAUTIONS

- Never attempt to open the case or remove the caseback yourself.
- The rubber gasket protecting the watch from water and dust should be replaced every 2-3 years.
- If the inside of the watch gets wet, you should bring it to an authorized service center to have it checked immediately.
- Do not expose the watch to extreme temperatures.
- Treat the watch with care and avoid any hard impact (bumps, falls, etc.).
- Don't buckle your strap too tight. You should be able to slide a finger between your wrist and the strap.
- The watch should be stored in a dry place.
- Avoid contact with gasoline, cleaning solvents, aerosols from

sprayers, adhesives, paints, etc. Chemical reactions caused by these materials can destroy the gaskets, the case and the polish of the watch.

- The sapphire crystal is strong enough, but it may crack if the watch falls or receives shock.
- Avoid storing your watch with precious jewellery, as diamonds can damage sapphire crystal.
- It is preferable to store the watch in a special separate box, lined with soft protective material.

## TECHNICAL SPECIFICATIONS

<b>Case diameter</b>	46 mm
<b>Case material</b>	316L Steel
<b>Strap width</b>	22 mm
<b>Glass type</b>	Sapphire crystal
<b>Movement</b>	Ronda 3520.D quartz
<b>Accuracy</b>	-10/+ 20 seconds per month
<b>Battery life</b>	up to 54 months



## WARRANTY

In accordance with the Decree of the Government of the Russian Federation No. 471 from 27.05.2016 «On amendments to certain acts of the Government of the Russian Federation on the return or exchange of technically sophisticated goods», this product is categorised as a technically sophisticated, and therefore, the buyer does not have the right to demand a free replacement for the repair period or a demand it be replaced with a similar product, and the buyer does not have the right to return or exchange the product with similar products of a different size, shape, different dimensions, style, colour or configuration.

The warranty only applies to products purchased from authorized sales outlets.

**The manufacturer's warranty is valid for one (1) year from the date of sale of the product.** The warranty covers defects and faults in assembly materials. If a problem arises during the warranty period, the manufacturer shall rectify any defects or repair any malfunctions absolutely free of charge. If the quality of the watch is not able to be restored through repairs, the manufacturer guarantees the replacement of the watch with the same watch or a model with

identical specifications. Repairs should only be carried out in authorized service centers. The contact details for authorized service centres are provided by authorized sales representatives.

## LIMITATIONS AND RESTRICTIONS

### The warranty does not cover:

- Battery life;
- glass and strap;
- defects in the watch caused by its use (e.g. scratches on the glass, changes in colour and/or material of non-metallic belts and bracelets, etc.);
- any damage to any part of the watch resulting from improper use, lack of care, or careless handling of the watch (bumps, chips, dents, cracks, etc.);
- any unauthorized repair or the owner's own tampering with the design of the watch and/or its appearance automatically excludes these watches from warranty service.

## WARRANTY CARD

All warranty claims for repairs must be accompanied by a warranty card which has been filled out by both the buyer and the vendor who sold the watch.

SERIAL NUMBER \_\_\_\_\_

SALE DATE \_\_\_\_\_

### SELLER

Name  
of the seller organization \_\_\_\_\_

Address and phone number  
of the seller organization \_\_\_\_\_

L.S. \_\_\_\_\_ BUYER

I have read and agree with the terms of use. I do not have any complaints regarding the appearance or the performance of the watch.

**ATTENTION! THE WARRANTY CARD IS NOT VALID  
WITHOUT THE SELLER'S STAMP!**

\_\_\_\_\_  
Name of the authorized service center

### The following steps have been taken in troubleshooting:

\_\_\_\_\_  
\_\_\_\_\_  
\_\_\_\_\_

Employee  
of the service center

Date

\_\_\_\_\_  
(Signature, full name)

\_\_\_\_\_  
(Signature, full name)

Owner

Date

\_\_\_\_\_  
(Signature, full name)

\_\_\_\_\_  
(Signature, full name)

+7 (351) 700-13-79

+7 (495) 741-95-36

454091, Russian Federation,  
Chelyabinsk, 25 Tsvillinga Street

[sales@molnija.shop](mailto:sales@molnija.shop)

[www.molnija.shop](http://www.molnija.shop)

***Молния***