

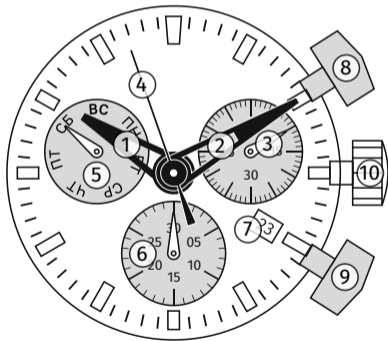
*Молния*

—  
PASSPORT

ENERGY 2.0

- 1 – Hour hand
- 2 – Minute hand
- 3 – Second hand
- 4 – Central second hand
- 5 – Day of the week

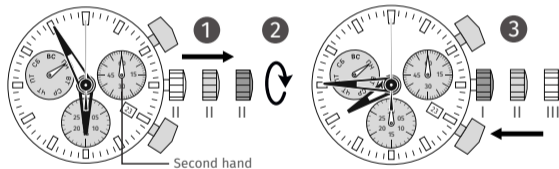
- 6 – Minute counter
- 7 – Date
- 8 – Pusher A
- 9 – Pusher B
- 10 – Winding crown



## DESCRIPTION, FUNCTIONS AND DISPLAYS

### SETTING THE TIME

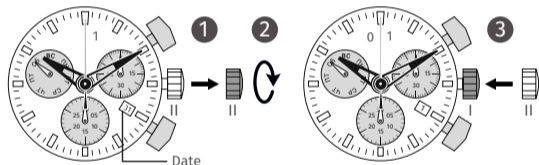
- 1\* Pull the winding crown out to position III (the watch will stop).
- 2 Turn the winding crown until the correct time is set **08:45**.
- 3\* Push the winding crown back in to position I.



**Note:**\* To accurately set the time to the nearest second, 1 pull the winding crown out when the second hand is at twelve o'clock (I). After setting the hour and minute hands 3, push the winding crown back in to position I at the same second.

## SETTING THE DATE (QUICK SET-UP)

- 1 Pull the winding crown out to position **II** (the watch will continue to run).
- 2 Turn the winding crown until the correct date is set **01**.
- 3 Push the winding crown back in to position **I**.



**Note.** You can change the date between 21:00 and 12:00. Please remember that you can only set the date forward, ahead of the current date.

## SETTING THE DATE, DAY OF WEEK AND TIME

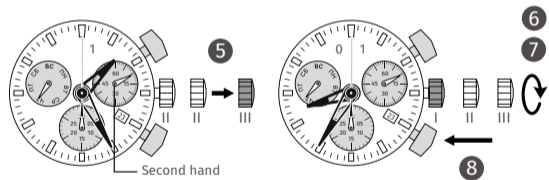
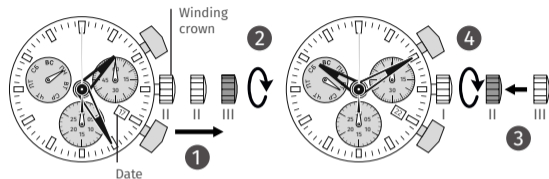
Example:                      Date/time on the watch: 17/01:25/ПН  
   Current date and time: 23/20:35/ЧТ

- 1\* Pull the winding crown out to position **III** (the watch will stop).
- 2 Rotate the winding crown clockwise until you reach yesterday's date.
- 3\* Push the winding crown back in to position **II**.
- 4 Turn the crown until you see yesterday's date **22**.
- 5\* Pull the winding crown out to position **III** (the watch will stop).
- 6 Turn the winding crown counterclockwise until the correct date **23** is visible as well as the correct day of the week **ЧТ**.
- 7\*\* Continue to turn the winding crown until the time is correct **20:35**.
- 8 Push the winding crown back in to position **I**.

**Example:**

Date/time on the watch: 17 / 01:25 / ПН

Current date and time: 23 / 20:35 / ЧТ



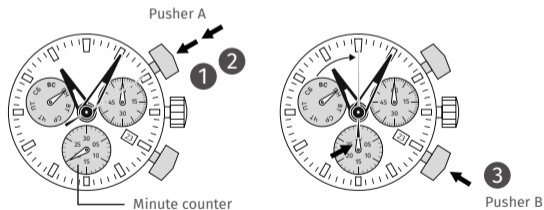
**Note.\*** To accurately set the time to the nearest second, read the instructions under the heading «Setting the time».

**\*\*** Please make sure the time of day is suitable for setting the time.

**CHRONOGRAPH: THE BASIC FUNCTIONS (START / STOP / RESET)**

**Example:**

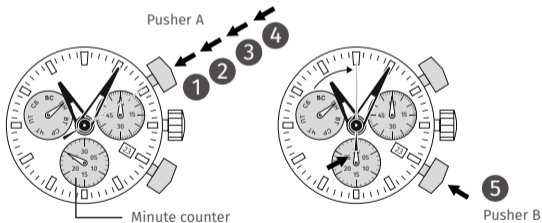
- 1 Start:** Press pusher A
- 2 Stop:** To stop the counter, press pusher **A** in again and read the two chronograph counters: 20 min /10 sec
- 3 Reset the counter:** Press pusher **B**. (2 chronograph hands return to zero).



## RESUMING THE COUNTER

Example:

- 1 Start:** starting time.
- 2 Stop:** e.g.: 15 minutes 5 seconds after **1**
- 3 Restart:** The count resumes
- 4 Stop:** e.g. 13 min 5 sec after **3** = 28 min 10 sec  
(The sum of the recorded time is displayed)
- 5\*** **Reset:** 2 chronograph hands return to zero.

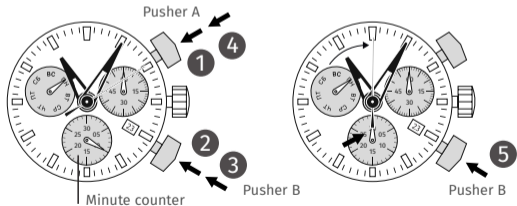


**Please note:** \* **4** The step can be repeated to add to the recorded time spans, the counter can be resumed by pressing pusher A. (Restart / Stop, Restart / Stop,...)

## CHRONOGRAPH: THE INTERMEDIATE REFERENCE TIME AND INTERVAL COUNT

Example:

- 1 Start:** starting time
- 2 Interval display:** e.g. 10 min 10 sec (Counting continues in the background).
- 3 Catching up with the recorded time:** The 2 chronograph hands will quickly take position according to the recorded time.
- 4 Stop:** The final time is displayed.
- 5\*** **Reset:** 2 chronograph hands return to zero.

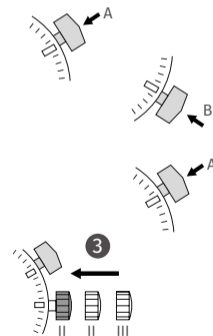
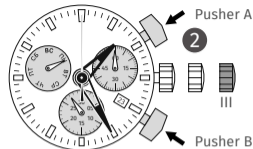
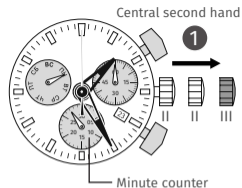


**Note:** \* **3** After this step, counter readings for recorded time spans or intermediate readings can be viewed by pressing pusher B. (Interval display, catch-up to the recorded time...)

## RETURNING THE CHRONOGRAPH HANDS TO ZERO

**Example:** One or more chronograph hands are not at zero (for example, after replacing the battery) and need to be set to that position.

- 1** Pull the crown out to position **III**. (The 2 chronograph hands are in their correct zero position or incorrect position).
- 2** Press and hold down pushers A and B at the same time for at least 2 seconds (the centre second hand will rotate 360 ° —, and the adjustment mode will be activated).



### Bringing up the central second hand

In one step: ↙ A 1 x short movement

Continuously: ↙ A long movement

### Bringing up the next arrow In ↙

**Bringing up the hand for the minute counter (6 o'clock position)**

In one step: ↙ A 1 x short movement

Continuously: ↙ A long movement

- 3** Return the winding crown to position **I**.  
Finish setting the chronograph arrows (can be done at any time).

## INSTRUCTIONS FOR USE, CARE AND STORAGE

### 1. WATER RESISTANCE

Energy 2.0 watches have a water resistance of 10 atm, this water resistant mark is conditional and denotes a pressure of 10 atmospheres. This watch will not be damaged by splashes or rain, and you can wash your hands without taking it off. You can swim with this watch and it can be submerged in water. However, these watches are not suitable for scuba diving.

**ATTENTION: PLEASE REMEMBER THAT YOU MUST NOT PULL THE CROWN OUT WHEN THE WATCH IS WET.**

Over time, seals will age and become worn, which will have a negative impact on the water resistance of the watch. We recommend that you have the condition of the gasket examined and the water resistance checked once a year at an authorized service center and have the seal replaced if necessary.

### 2. CARE

We recommend that you clean the watch regularly (except for the leather strap) with a soft cloth moistened with warm soapy water.

### 3. PRECAUTIONARY MEASURES

- Never attempt to open the case or remove the back cover by yourself.
- The rubber gasket protecting the watch from water and dust should be replaced every 2-3 years.
- If the inside of the watch gets wet, you should bring it to an authorized service center to have it checked immediately.
- Do not expose the watch to extreme temperatures.
- Treat the watch with care and avoid any hard impact (bumps, falls, etc.).
- Do not fasten the strap too tight. You should be able to slide a finger between your wrist and the strap.
- The watch should be stored in a dry place.
- Do not let it come in contact with gasoline, cleaning solvents, spray aerosols, adhesives, paint, etc. These substances cause chemical reactions which could damage the gasket, case and the polished surfaces of the watch.
- Sapphire crystal is quite durable, but it may crack if the watch is dropped or hit.
- Avoid storing your watch with precious jewelry, as diamonds can damage sapphire crystal.

- It is preferable to store the watch in a special separate box, lined with soft protective material.

## TECHNICAL SPECIFICATIONS

Case diameter	44 mm
Case material	316L Steel
Strap width	22 mm
Type of glass	Sapphire crystal
Movement	Ronda Z60 quartz movement
Accuracy	-10 ...+20 seconds per month
Standard battery	395
Battery lifetime	50 months

## WARRANTY

In accordance with the Decree of the Government of the Russian Federation No. 471 from 27.05.2016 «On amendments to certain acts of the Government of the Russian Federation on the return or exchange of technically sophisticated goods», this product is categorised as a technically sophisticated, and therefore, the buyer does not have the right to demand a free replacement for the repair period or a demand it be replaced with a similar product, and the buyer does not have the right to return or exchange the product with similar products of a different size, shape, different dimensions, style, colour or configuration.

The warranty only applies to products purchased from authorized sales outlets.

**The manufacturer's warranty is valid for one (1) year from the date of sale of the product.** The warranty covers defects and faults in assembly materials. If a problem should arise during the warranty period, the manufacturer shall rectify any defects or repair any malfunctions absolutely free of charge. If the quality of the watch is not able to be restored through repairs, the manufacturer guarantees the replacement of the watch with the same watch or a model



with identical specifications. Repairs should only be carried out at authorized service centres. The contact details for authorized service centers are provided by authorized sales representatives.

## LIMITATIONS AND RESTRICTIONS

### The warranty does not cover:

- glass and strap;
- wear and tear or defects resulting from the use of the watch (e.g. scratches on the glass, changes in the colour and/or material of non-metallic straps and bracelets, etc.);
- any damage to any part of the watch resulting from improper use, lack of care, or careless handling of the watch (bumps, chips, dents, cracks, etc.);
- any unauthorized repair or the owner's own tampering with the design of the watch and/or its appearance automatically excludes these watches from warranty service.

## WARRANTY CARD

All warranty claims for repairs must be accompanied by a warranty card which has been filled out by both the buyer and the vendor who sold the watch.

SERIAL NUMBER \_\_\_\_\_

DATE OF SALE \_\_\_\_\_

VENDOR

name of trading  
organization \_\_\_\_\_

Address and phone  
number \_\_\_\_\_

(trading organization)

STAMP HERE \_\_\_\_\_ BUYER

I have read and agree with the terms of use. I do not have any complaints regarding the appearance or the performance of the watch.

**ATTENTION! THE WARRANTY CARD IS NOT VALID  
WITHOUT THE VENDOR'S STAMP!**

**NOTES**

---

Name of the authorized service centre

**The following steps have been taken in troubleshooting:**

---

---

---

Service centre employee      Date

---

(Signature, full name)

Owner      Date

---

(Signature, full name)

---

---

---

---

---

---

---

---

---

---

+7 (351) 700-13-79

+7 (495) 741-95-36

454091, Russian Federation,  
Chelyabinsk, 25 Tsvillinga Street

[sales@molnija.shop](mailto:sales@molnija.shop)

[www.molnija.shop](http://www.molnija.shop)

***Молния***